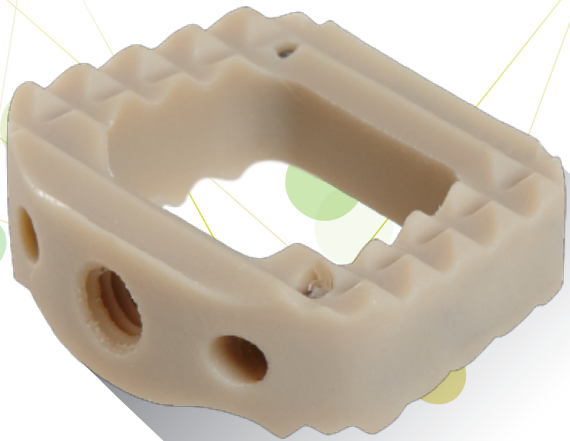


# ZEUS-C<sup>®</sup>

CERVICAL  
INTERBODY

FEATURES  
AND  
BENEFITS

CERVICAL  
INTERBODY DEVICES



AMENDIA.

# Anterior curvature? Yes, we've checked that column.

The Zeus®-C Cervical Interbody Device facilitates fusion in the cervical spine by using an anterior approach in conjunction with instrumentation. Constructed from innovative PEEK material, the Zeus-C is available in various sizes to accommodate the diverse anatomical needs of patients. Aggressive teeth on the superior and inferior surfaces help to grip the endplates and prevent expulsion.

## The Zeus-C features:

- Innovative PEEK material construction
- Tantalum radiopaque markers to optimize visibility and placement
- Aggressive teeth to help prevent implant migration
- Interior graft space for placement of autograft material
- A high degree of compressive strength and dimensional stability
- Radiotransparent material construction featuring two radiopaque markers
- Anterior curvature to maximize anterior column support

## ZEUS-C | CERVICAL INTERBODY

PART NUMBER	SIZE (W X L X H)
1001105LS	14mm x 12mm x 5mm
1001106LS	14mm x 12mm x 6mm
1001107LS	14mm x 12mm x 7mm
1001108LS	14mm x 12mm x 8mm
1001109LS	14mm x 12mm x 9mm
1001110LS	14mm x 12mm x 10mm
1001111LS	14mm x 12mm x 11mm
1001112LS	14mm x 12mm x 12mm
1001105LL	17mm x 14mm x 5mm
1001106LL	17mm x 14mm x 6mm
1001107LL	17mm x 14mm x 7mm
1001108LL	17mm x 14mm x 8mm
1001109LL	17mm x 14mm x 9mm
1001110LL	17mm x 14mm x 10mm
1001111LL	17mm x 14mm x 11mm
1001112LL	17mm x 14mm x 12mm

# AMENDIA®

For more information or to place an order call **1-877-755-3329**, email [customerservice@amendia.com](mailto:customerservice@amendia.com) or visit [amendia.com](http://amendia.com).