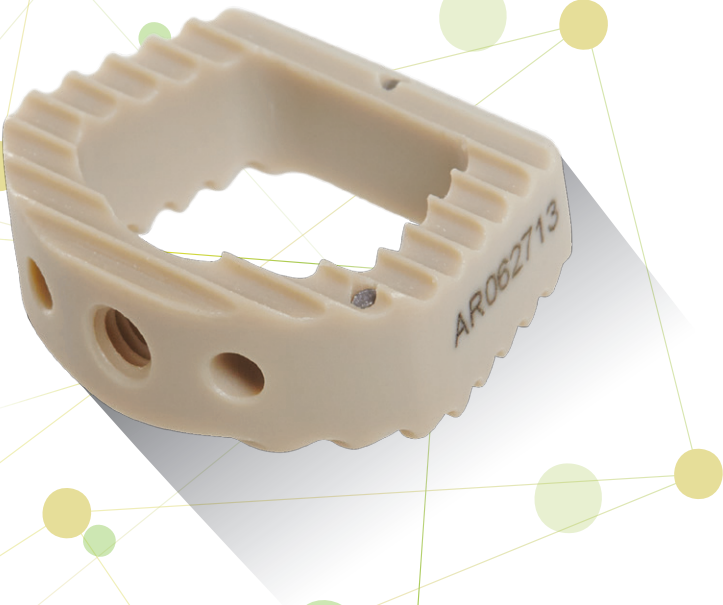


STINGRAY

CERVICAL
INTERBODY

FEATURES
AND
BENEFITS

CERVICAL
INTERBODY DEVICES



OMNI SPINE
AN AMENDIA LINE

AMENDIA.

A variety of implant sizes for a variety of patient types.

The Stingray Cervical Interbody Device was developed as an intercorporeal implant for anterior cervical spondylosis. Offered in two footprints, two degrees of lordosis and varying heights, the Stingray was designed to accommodate varying patient anatomies. Two tantalum x-ray markers and anti-migration ridges assist in proper placement of the implant.

The Stingray features:

- Innovative PEEK material construction
- 7° lordotic from 13.5mm x 14mm footprint in heights from 5mm to 12mm
- 5° lordotic from 14mm x 17mm footprint in heights from 6mm to 12mm
- Anti-migration ridges on both superior and inferior surfaces
- Large window for bone growth formation
- Two tantalum x-ray markers for radiographic identification
- Broad endplate contact provides stable positioning

STINGRAY | CERVICAL INTERBODY

STINGRAY I

PART NUMBER	SIZE (W X L X H)
105CP	13.5mm x 12mm x 5 mm
100CP	13.5mm x 12mm x 6 mm
110CP	13.5mm x 12mm x 7mm
120CP	13.5mm x 12mm x 8mm
130CP	13.5mm x 12mm x 9mm
140CP	13.5mm x 12mm x 10mm
150CP	13.5mm x 12mm x 11mm
160CP	13.5mm x 12mm x 12mm

STINGRAY II

PART NUMBER	SIZE (W X L X H)
200LCP	17mm x 14mm x 6mm
210LCP	17mm x 14mm x 7mm
220LCP	17mm x 14mm x 8mm
230LCP	17mm x 14mm x 9mm
240LCP	17mm x 14mm x 10mm
250LCP	17mm x 14mm x 11mm



AMENDIA

For more information or to place an order call **1-877-755-3329**, email customerservice@amendia.com or visit amendia.com.

OMNI-MM-128, Rev. 1